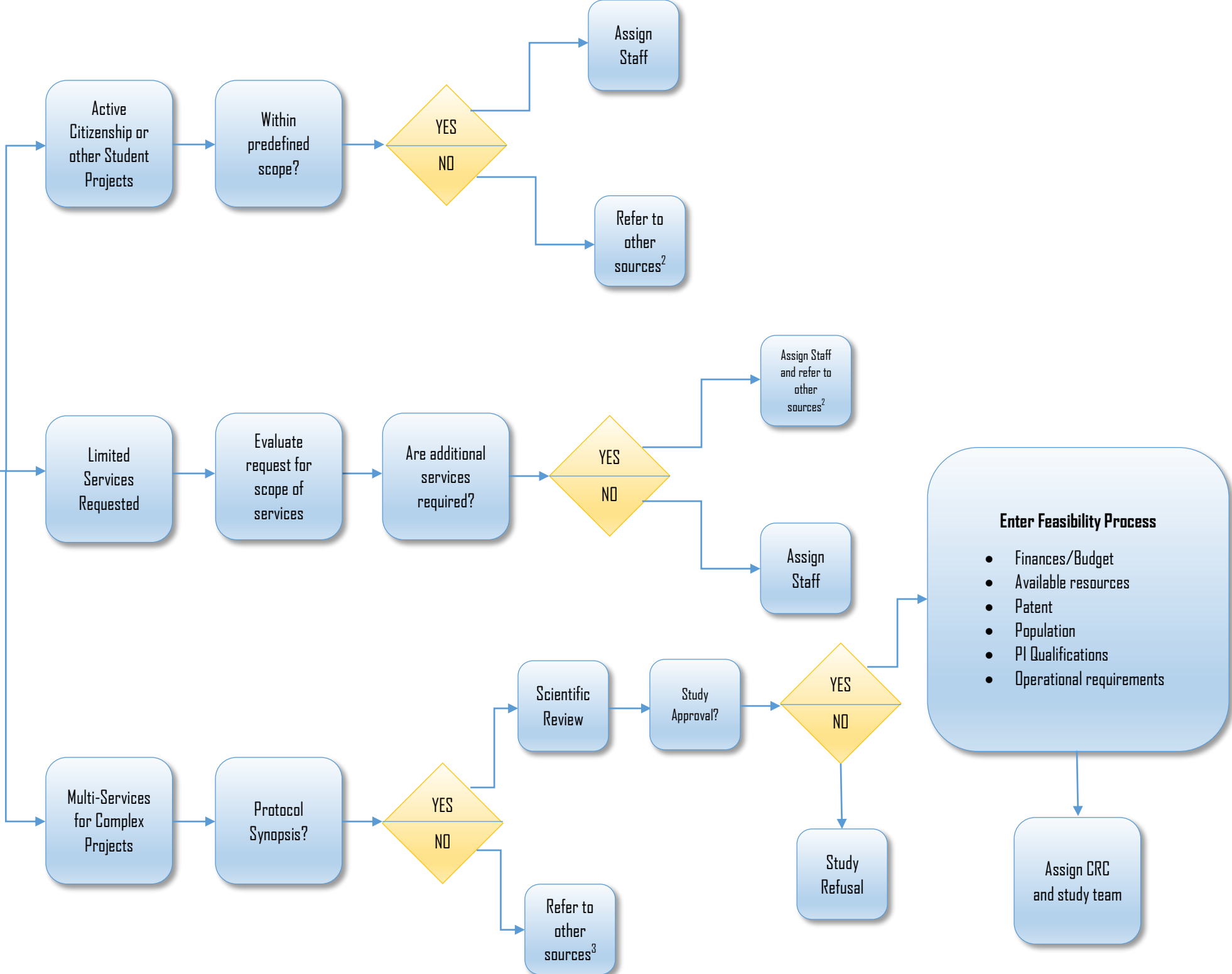


- Request for research services received or identified by:**
- CRC
 - Other CCR Staff
 - Epi/Bio¹
 - Statistician¹
 - Med Writer¹
 - Faculty
 - PI
 - Librarian

Contact/Forward to Assistant Dean Clinical Research –or– Director of Clinical Research



¹Identification of the need for research services other than statistics, database development, and medical writing

²Other resources could include faculty or staff support or training materials

³Refer to Epi/Bio, as needed, to develop research plan

- Enter Feasibility Process**
- Finances/Budget
 - Available resources
 - Patent
 - Population
 - PI Qualifications
 - Operational requirements